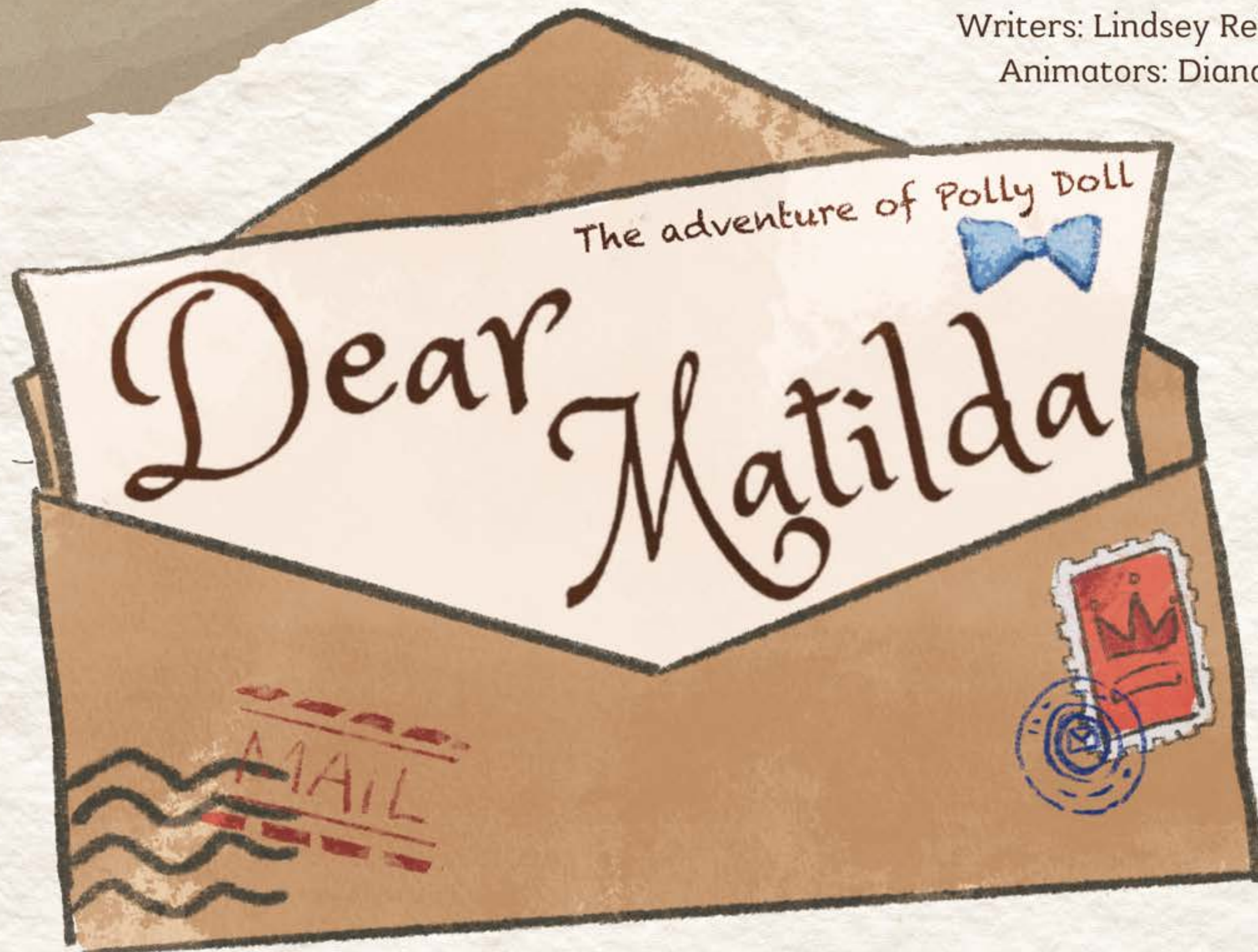


Writers: Lindsey Reilly, Leora Randall-Tavori

Animators: Diana Song, Coco Mai, Ash Liu





# Logline

Six-year-old Matilda is evacuated to the English countryside during the Blitz, ending up with Ernest, an elderly man, and Dorothy, his daughter-in-law.

A glimmer of magic emerges as Matilda's lost doll, Polly, starts sending letters, painting vivid tales of adventure that unexpectedly brighten everyone's wartime experience.



# Synopsis and format

Dear Matilda: The Adventures of Polly Doll is a nine-episode historical series for children. Each episode is approximately 20-25 minutes long.

Over the course of the series, thanks to Polly's heartfelt letters and the steadfast support of Ernest and Dorothy, Matilda begins to feel a genuine sense of belonging. She rediscovers her voice and realizes home isn't a physical place but instead where you find connection and acceptance.



# Audience and Themes

**Target Audience** : children aged 6-11

**Themes** : resilience, friendship, and tough decisions during challenging times.

While the backdrop of World War II may seem heavy, children are often more resilient and adaptable than we give them credit for, and a show like this can help them learn about courage, empathy, and hope, and process complex emotions and events in the world around them in a safe and supportive context.

The emphasis on Polly's strength and her enduring bond with Matilda can provide comfort and reassurance, showing young viewers that even in the face of adversity, there is still hope and the possibility of brighter days ahead.

The Netflix logo, featuring the word "NETFLIX" in a bold, red, sans-serif font on a white background.The BBC CBBC logo, featuring the letters "BBC" in small blue squares above the letters "CBBC" in a larger, green, sans-serif font, all on a blue background.The Prime Video logo, featuring the words "prime" and "video" in a white, sans-serif font, with a curved arrow pointing from "prime" to "video", all on a blue background.The Disney+ logo, featuring the word "Disney" in its signature script font and a plus sign, all in white on a dark blue background.



# Visual /Technique Treatment

**Software :**  
Toomboom Harmony,  
Procreate  
After effects



Polly Doll's world is a warm, loose animation style, with talking animals, and filled with heroes who always save the day.

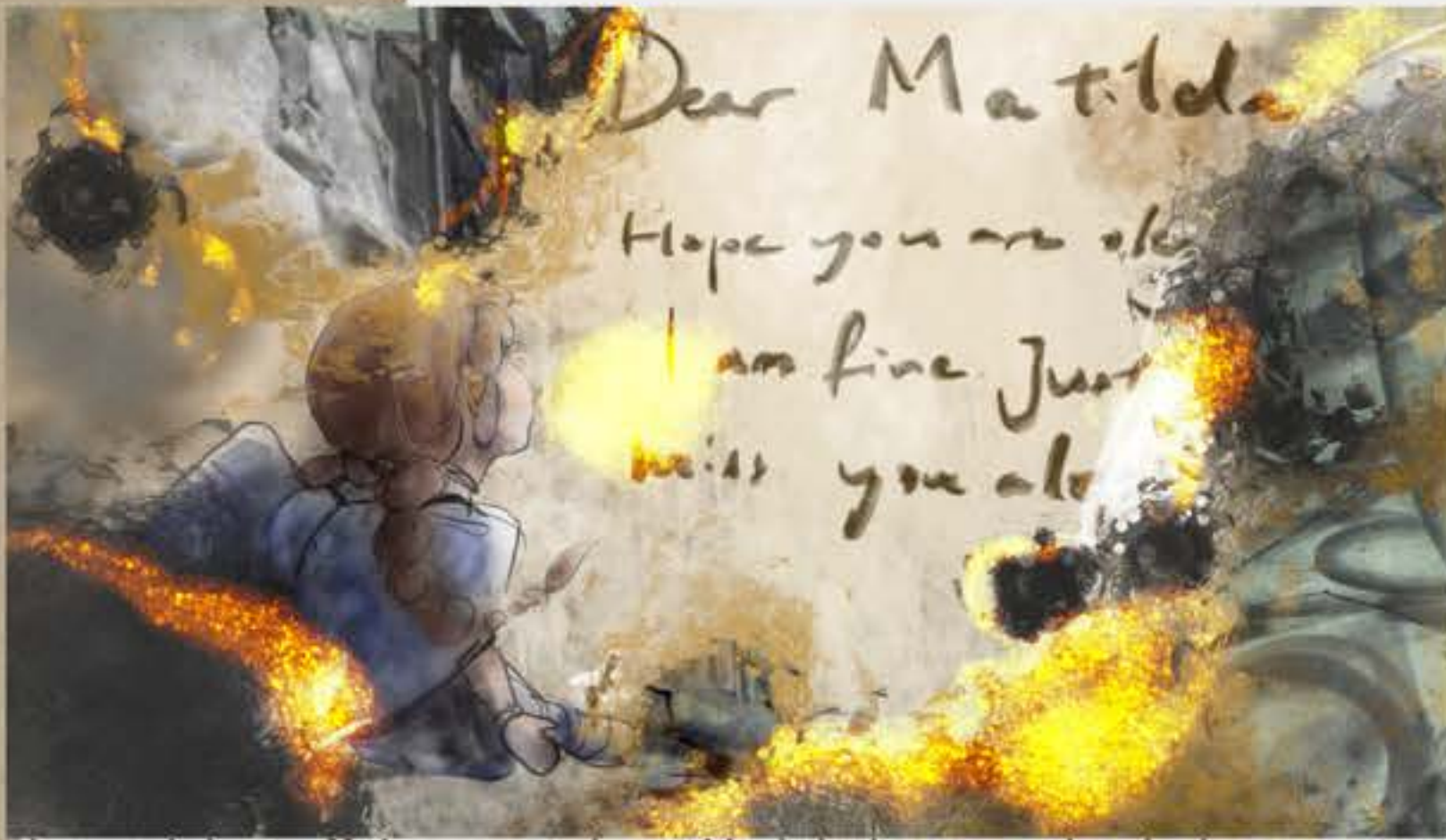


Matilda's world is a desaturated, textured, vintage animation style, authentically capturing the harsh realities of the era.

## Sound treatment:

Moody Piano music  
Country music  
1940's vintage Jazz  
effects of Vinyl Records  
old radio





The words burn off the page and crumble, bringing us to a bombed-out street



The words vaporize and become part of the billowing smoke coming out of the train

# Title animation design



The words dissolve into sea foam and wash up on Brighton Beach



# Characters





# Matilda

Matilda is a hopeful six-year-old girl trapped in the wrong moment in history. Because of the war, she can't explore beyond her backyard, which stifles her curiosity.

Matilda learns valuable lessons from Polly's letters and rediscovers herself in an unsettling world.



by Diana





by Diana



# Polly

Polly is more than just a doll. She's Matilda's eyes to the world, Ernest's way to connect with others, and Dorothy's chance to find herself. She's adventurous, brave, kind, and most importantly, loyal: to Matilda, to Britain, and to her sense of adventure.



Ernest is a grumpy widower in his fifties who lost his only son. His study is his refuge from the world. When Dorothy asks him to bring Matilda home, he can't say no, even if it means bringing the war back with her.

Against all odds, he's the one behind Polly's letters.



# Ernest

by Diana



# Dorothy

Dorothy is a young woman in her twenties dedicated to the war effort.

She avoids her grief by keeping busy. Dorothy takes Matilda in to feel needed, not thinking about the bigger picture.

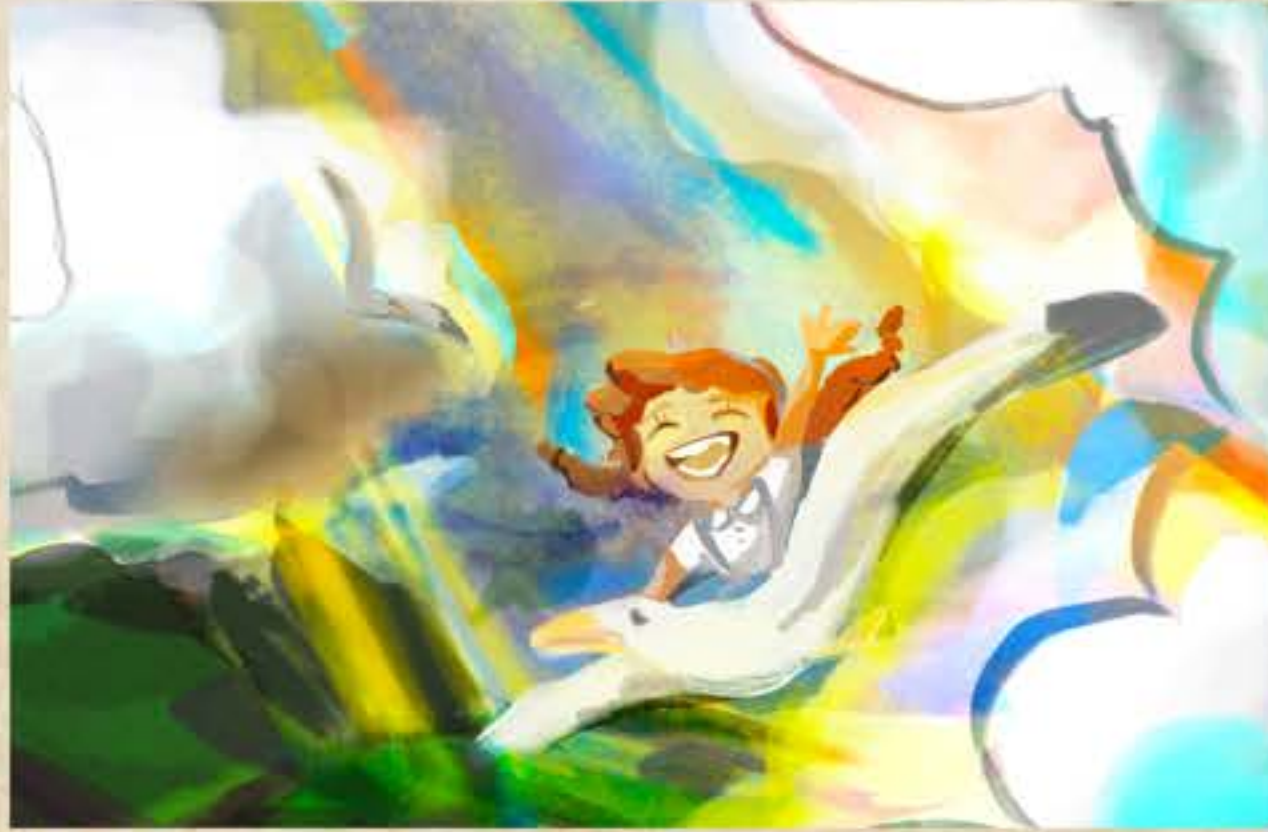
A suspect for Polly's letters. She may seem tough on the outside, but her stoicism belies her inner turmoil.



by Diana

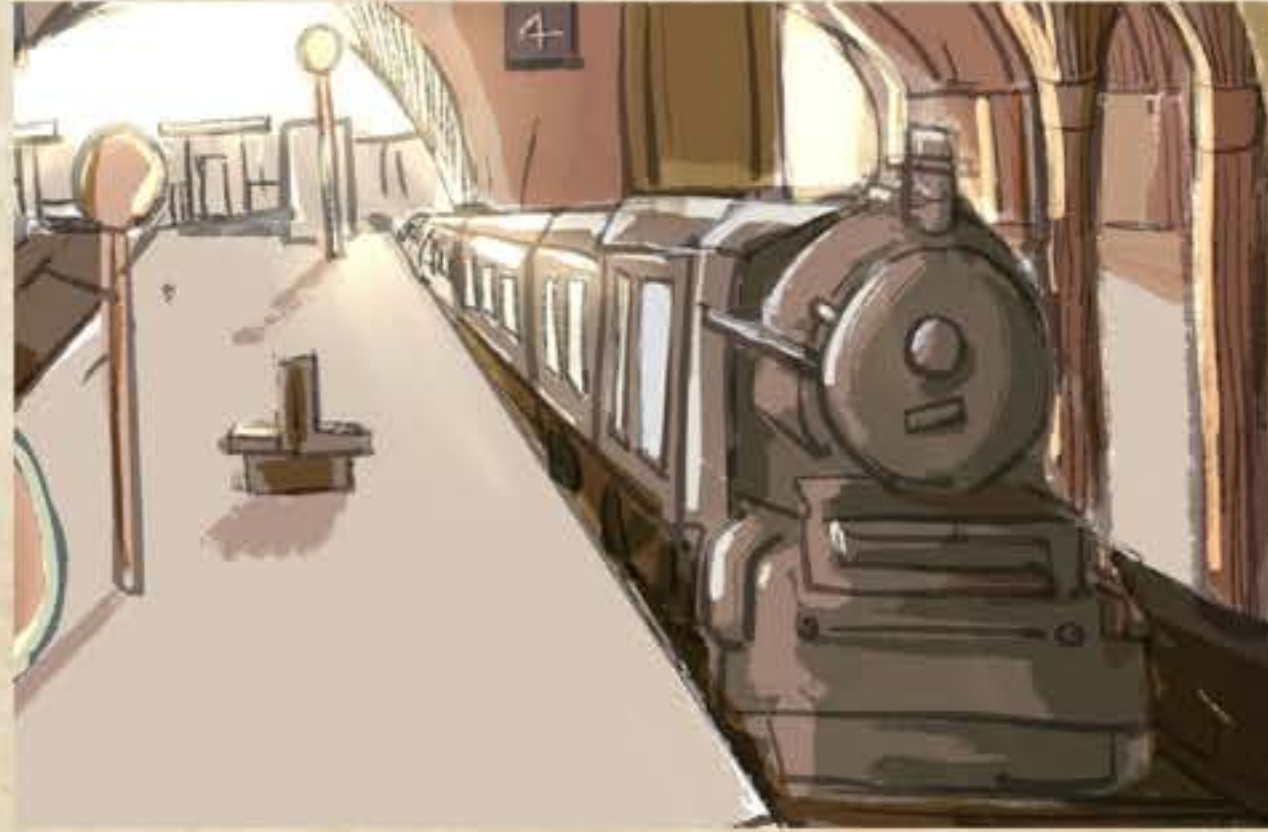


# Concept of Polly's adventure





# Concept of Matilda's world





A watercolor illustration of a desk scene. A torn, light-colored paper label with the word "Episodes" in a white, elegant script font is pinned to the center of the desk. The desk surface is covered with a brown and tan patterned cloth. On the desk, there is a small, light-colored, textured object resembling a rock or a small sculpture, a small black paperclip, a small black paperclip, and a small black paperclip. In the background, a wooden chair with a curved back is visible, and a window with a checkered pattern is partially seen on the left. The overall style is soft and artistic, with warm tones and visible brushstrokes.

# Episodes



# Episode 1: "Operation Pied Piper"

In a wartime evacuation from London to the English countryside, Matilda loses her beloved doll, Polly, and becomes selectively mute as a result.

However, hope flickers to life when a mysterious note from Polly unexpectedly arrives. Ernest reads it to Matilda, despite Dorothy's concerns.

by ASH





## Episode 1: "Operation Pied Piper"

As Polly climbs out of the rubble, she realizes Matilda is gone. She finds a stationary set in nearby debris and writes Matilda a letter to let her know she's okay.

Seeing that the nearest postbox is too high for her, Polly is sad. Suddenly, a cat walks by. Polly realizes the cat can help her.

Polly climbs onto the cat and reaches the top of the postbox. She's proud as she puts Matilda's letter in the postbox.

The next morning Matilda doesn't cry. Instead, she sits by the door underneath the mail slot, suddenly hopeful.

Dorothy doesn't understand what's gotten into her. Ernest grunts and disappears into his study.



by Coco



## Episode 2: "Patience Is A Virtue"



Matilda starts to spend every day by the mail slot waiting for Polly's next letter.

Dorothy, unable to get Matilda to move, makes more progress knitting dog-hair clothing for troops with The Women's Voluntary Service.



## Episode 2: "Patience Is A Virtue"

In a bunker, Polly writes to Matilda. As a bomb hits London, a rat crashes into Polly, spilling ink everywhere.

Irritated, Polly tries to fix the letter but makes it worse. In the midst of despair, the rat returns with paper and coal. Encouraged, Polly tries again.

In her letter to Matilda, Polly assures her that London's spirit still abounds despite the war and urges her to be patient.





## Episode 4: "Charlie"

Ernest locks himself in his study, alarming Matilda. Dorothy comforts her with a story of bravery about Charlie, Ernest's son, and her late husband.

Dorothy tells the story from her perspective, and viewers learn about death, grief, and mourning alongside Matilda.

Matilda sketches a picture of Charlie and "James" in uniform, slipping it under Ernest's door.

He invites Matilda inside, where she reveals that James is her brother who met the same fate as Charlie.

Ernest promises to leave the study and join her for supper soon.





## Episode 4: "Charlie"

Among Ernest's papers, a letter addressed to Matilda in Polly's handwriting reveals him as Polly's author.







## Episode 8:

### **"I'll Be Home For Christmas"**

It is Matilda's first Christmas away from London, and she misses home.

Dorothy plans to spend Christmas Eve and Day helping others. It upsets Matilda that Dorothy is volunteering again rather than staying home.

Listening to King George VI's Christmas speech on the radio, Ernest remains silent.



## Episode 9: "Time To Move On"

Dorothy confronts Ernest about Polly's letters. He confesses, urging her to keep it a secret. Reluctantly, Dorothy agrees.

Despite Dorothy's doubts, Matilda speaks publicly for the first time and attributes her confidence to Polly.

Meanwhile, Ernest is in his study, writing Polly's latest letter.





## Episode 9: "Time To Move On"

Polly finds a bombed playground and mourns the innocence lost. It reminds her that things are still dangerous, and she understands why Matilda can't return soon.

Polly writes her dear Matilda a goodbye letter on a train leaving London.

When Matilda needs her, Polly hopes she can reread their letters. Taking a last look at London, Polly dreams of a better future where she and Matilda can be together.

We realize this will be Ernest's last letter.



[https://www.youtube.com/watch?v=KMtd3ije\\_AE](https://www.youtube.com/watch?v=KMtd3ije_AE)



by COCO





## Episode 9: "Time To Move On"

In the mail, Ernest discovers a letter from Matilda's mother. It echoes Polly's first letter, promising London's spirit despite the war and encouraging patience.

Matilda, excited to hear from her mother, doesn't ask about Polly.

Ernest puts Polly's letter away in his desk without giving it to Matilda. We don't always need to say goodbye; sometimes life surprises us and shows us when it's time to move on.



by ASH